

Recovering Antminer L3 firmware using SD card

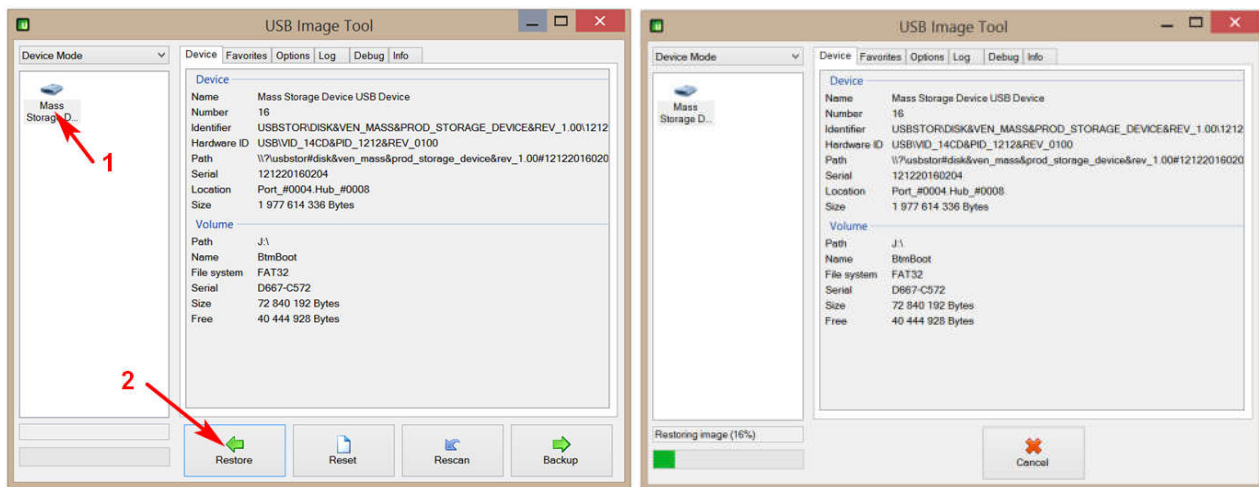
We need:

- microSD card with a volume of 512 MB or more (hereinafter referred to as the card);
- PC with microSD card reader;
- ASIC miner Antminer L3 assembly (hereinafter referred to as the miner) or its separate control board (hereinafter referred to as CB).

1. Burn SD Cards

The file for recovering the CB miner "Antminer-L3-recovery_FULL_REFLASH.img" is an image file, which must be written to a card with a capacity of at least 512 MB. To write a file, use the USB Image Tools program (located in the archive) or download its current version from the website: <https://www.alexpage.de/usb-image-tool/download/>

Unpack the usbit.zip archive and run USB Image Tool.exe. Insert the card into your computer's card reader. In the USB Image Tool select the SD card that appears. Click the "Restore" button and select the file. Wait for the recording process to finish.



2. Turn off the power of the miner
3. Install the card in CB
4. Turn on the power of the miner
5. Wait until the red and green LEDs on the front panel flash together
6. Turn off the power, remove the card, connect all wires and loops, turn on the power. After turning on the device, you can flash it with any firmware via its web interface.

Note: If the CB is not flashed or reboots endlessly when trying to flash, then it's necessary for the CB to forcibly switch to boot mode from the card. To do this, in the off state, you must using tweezers, close the contact circuit as shown in the picture output to "-" (body) CB - contact around the hole. Power on and after a couple of seconds remove the tweezers from the contacts. Wait until the end of the firmware flashing process.

